

**Q1.**

How many centimetres are there in 3.7 metres?

Circle your answer.

0.037

0.37

37

370

**(Total 1 mark)****Q2.**

Complete the table.

Minutes	Hours
30	$\frac{1}{2}$
40	
	$2\frac{1}{4}$

**(Total 2 marks)****Q3.**

Textbooks are stored on two shelves.

Each shelf is 0.72 metres long.

Each textbook is 30 millimetres wide.

Not drawn accurately



Can 50 textbooks be stored on these shelves?

You **must** show your working.

.....

.....

.....

.....

Answer .....

**(Total 3 marks)**

**Q4.**

Sam wants to buy a camera for £345

He has already saved £96

Each week

his pay is £80

he saves 30% of this pay.

How many **more** weeks must he save?

.....

.....

.....

.....  
.....

Answer ..... weeks

(Total 4 marks)

**Q5.**

Mr Jones works for five days each week.

If he uses his car to travel to work,

each day he drives a total distance of 24.2 miles  
his car travels 32.3 miles per gallon of petrol  
petrol costs £1.27 per litre.

If he uses the bus to travel to work, he can buy a weekly ticket for £19.50

Use 1 gallon = 4.5 litres

Is it cheaper if he uses his car or the bus to travel to work?

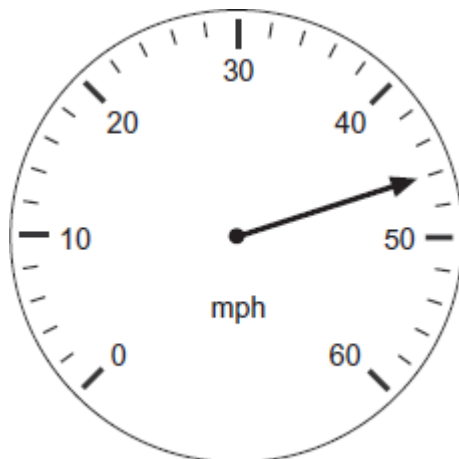
You **must** show your working.

.....  
.....  
.....  
.....  
.....  
.....  
.....  
.....  
.....  
.....  
.....  
.....  
.....  
.....  
.....

Answer .....

(Total 5 marks)

Q6.(a) Write down the speed shown on the speedometer.



Answer ..... mph

(1)

(b) A car travels for 1 hour 30 minutes at an average speed of 28 mph.

How many miles does the car travel?

.....

.....

.....

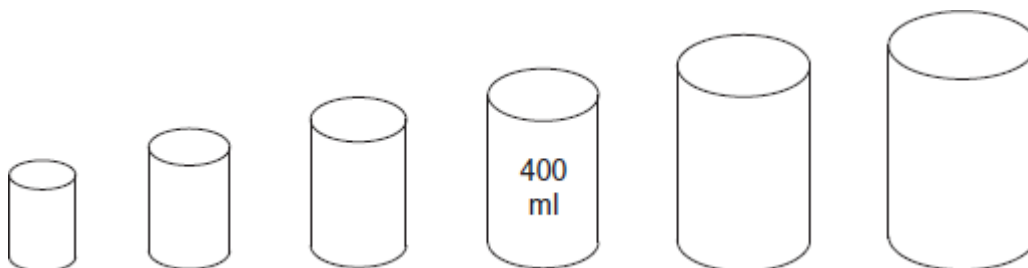
Answer ..... miles

(3)

(Total 4 marks)

Q7.A company makes tins in six different sizes.

For each increase in size, the capacity of the tin **doubles**.



(a) Work out the capacity of the smallest tin.

.....

Answer ..... ml

(2)

- (b) Work out the capacity of the largest tin.  
Give your answer in litres.

.....

.....

Answer ..... litres

(2)

(Total 4 marks)

**Q8.**A scooter is travelling at a constant speed of 75 kilometres per hour.

- (a) The scooter travels at this speed for 20 minutes.

How many kilometres has the scooter travelled in this time?

.....

.....

Answer ..... km

(2)

- (b) The speed limit is 50 **miles** per hour.

Is the scooter travelling faster or slower than the speed limit?

Faster

Slower

You **must** show your working.

.....

.....

.....

(2)  
(Total 4 marks)

**Q9.(a)** One litre of fuel weighs 737 grams.

How much does 70 litres of fuel weigh?  
Give your answer in kilograms.

.....  
.....  
.....

Answer ..... kg

(3)

(b) Fuel flows through a pump at 30 litres per minute.

How long does it take to put 70 litres in a tank?  
Give your answer in minutes and seconds.

.....  
.....  
.....

Answer ..... minutes ..... seconds

(3)  
(Total 6 marks)

**Q10.**A builder has a pipe that is 2 metres long.

He wants to cut lengths of 80 cm, 45 cm and 70 cm.

Does he have enough pipe?  
You **must** show your working.

.....  
.....

.....  
 .....

(Total 3 marks)

**Q11.** You are given      2.2 pounds = 1 kilogram  
    1 kilogram = 1000 grams

Matthew's grandmother asked him to buy  $\frac{1}{2}$  pound of cherries.

Cherries are sold in 100 g, 250 g and 500 g packs.

Which pack should he buy to get the nearest amount?  
 You **must** show your working.

.....  
 .....

Answer ..... g

(Total 4 marks)

**Q12.** The scale on a map is 1 : 500 000

Two towns are 8 cm apart on the map.

Work out the actual distance between the towns.  
 Give your answer in kilometres.

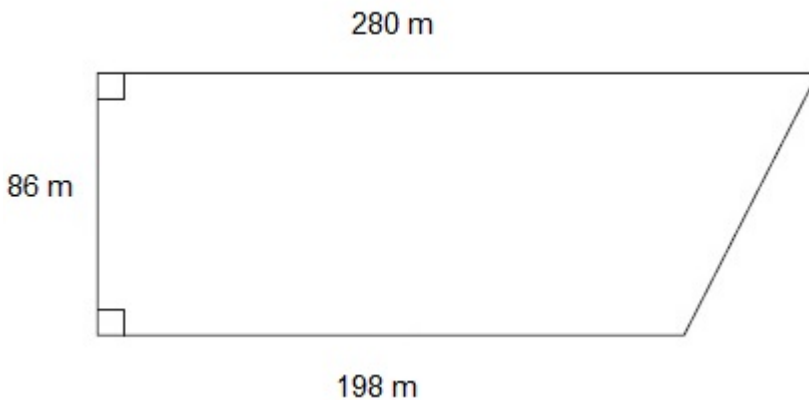
.....  
 .....

Answer ..... km

(Total 3 marks)

Q13. The diagram shows a field.

Not drawn accurately



(a) Work out the area of the field.

.....  
 .....  
 .....

Answer ..... m<sup>2</sup>

(2)

(b) 1 acre = 4047 square metres

A farmer keeps cows in the field.  
 He is allowed 7 cows per acre.

Work out the maximum number of cows he is allowed to put in the field.

.....  
 .....  
 .....  
 .....  
 .....

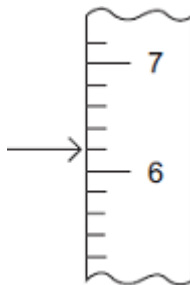


.....

Answer .....

(4)  
(Total 6 marks)

Q14.(a) Robin says that the arrow is pointing to 6.1



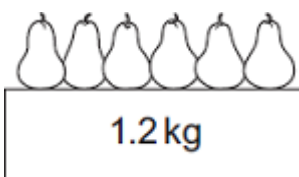
He is **not** correct.

What is his mistake?

.....  
.....

(1)

(b) Six pears of equal size are weighed on a digital scale.



Estimate the weight of one pear.  
Give your answer in grams.

.....  
.....  
.....

Answer ..... grams

(3)  
(Total 4 marks)

